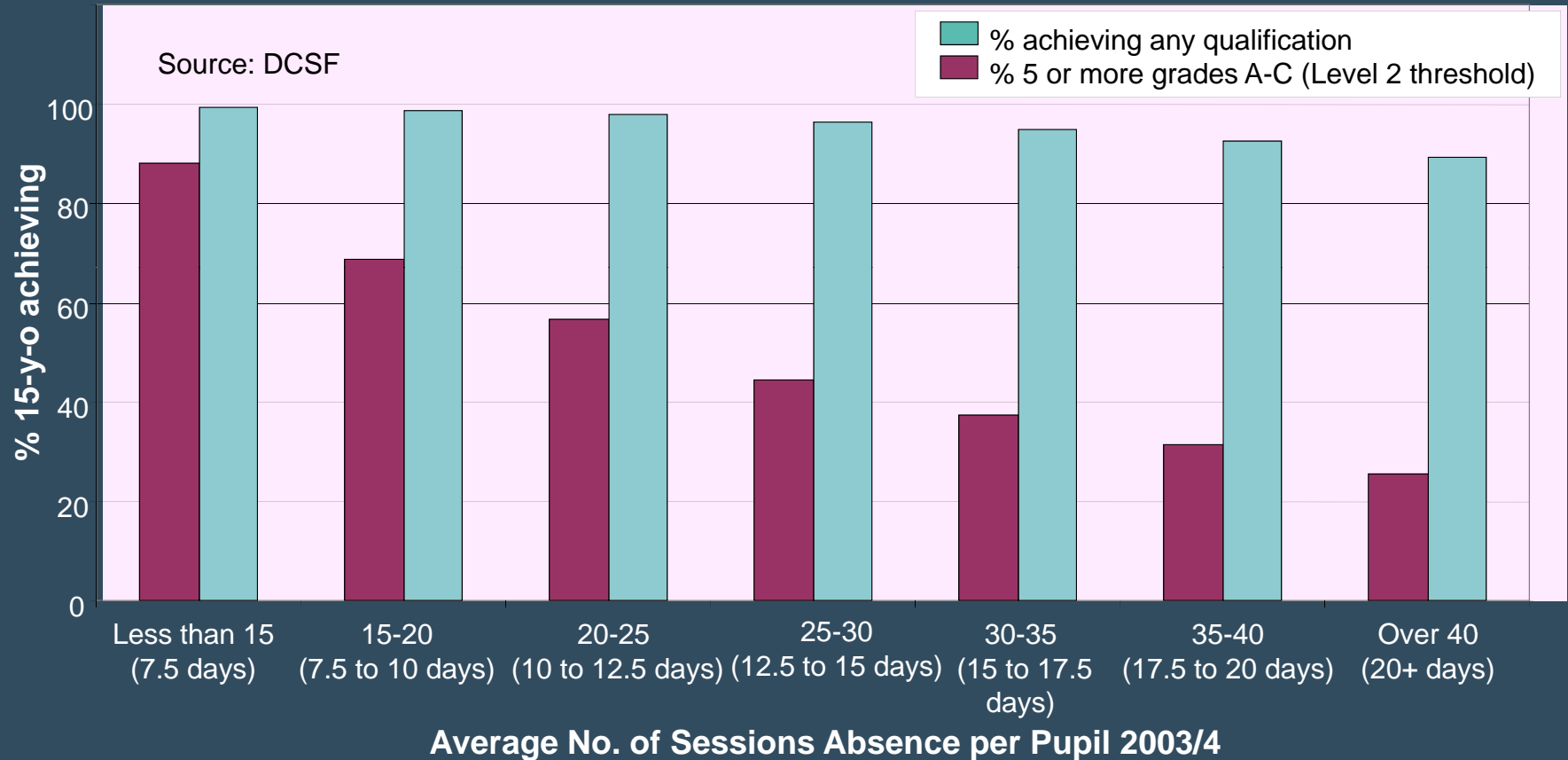


The Correlation between Attendance and Attainment

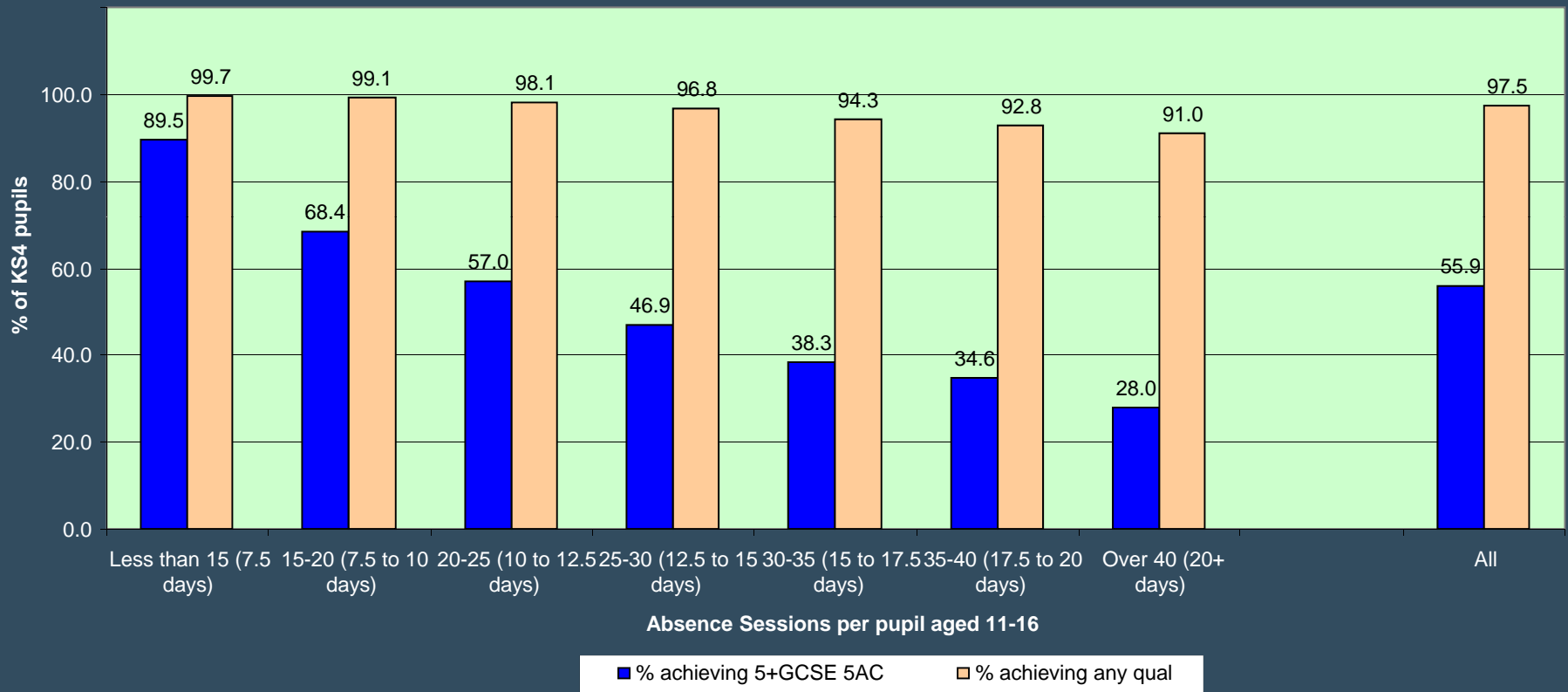
In Secondary and Primary Schools

There is a strong correlation between the amount of absence in a school and the qualifications that its pupils achieve. These graphs show the correlation in Primary and Secondary schools. They demonstrate that every lesson in school matters and that children who have time off often find it difficult to catch up and do well at school, particularly as the average amount of absence per pupil increases.

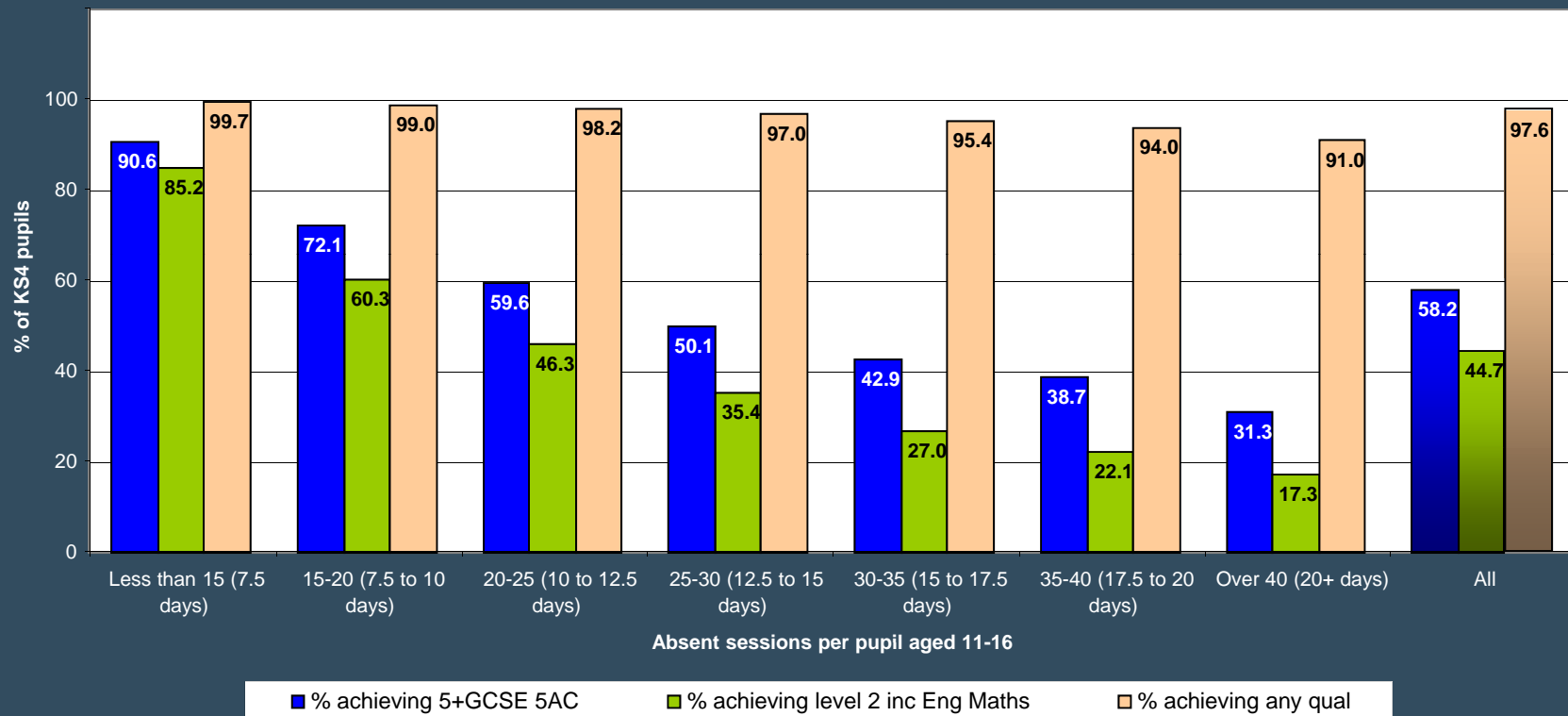
Secondary School Key Stage 4 Performance by Average Absence Sessions 2003/4



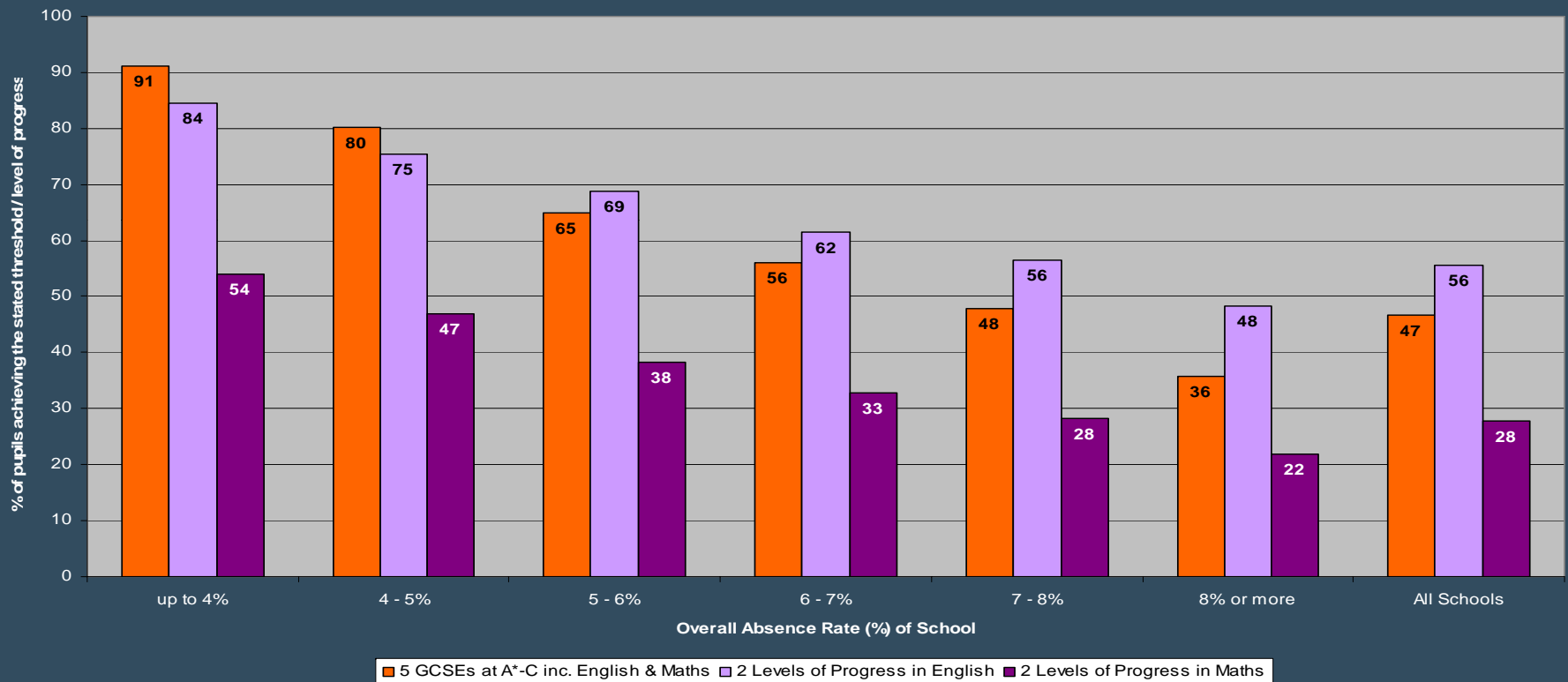
Secondary School Key Stage 4 Performance by Average Absence Sessions 2004/5



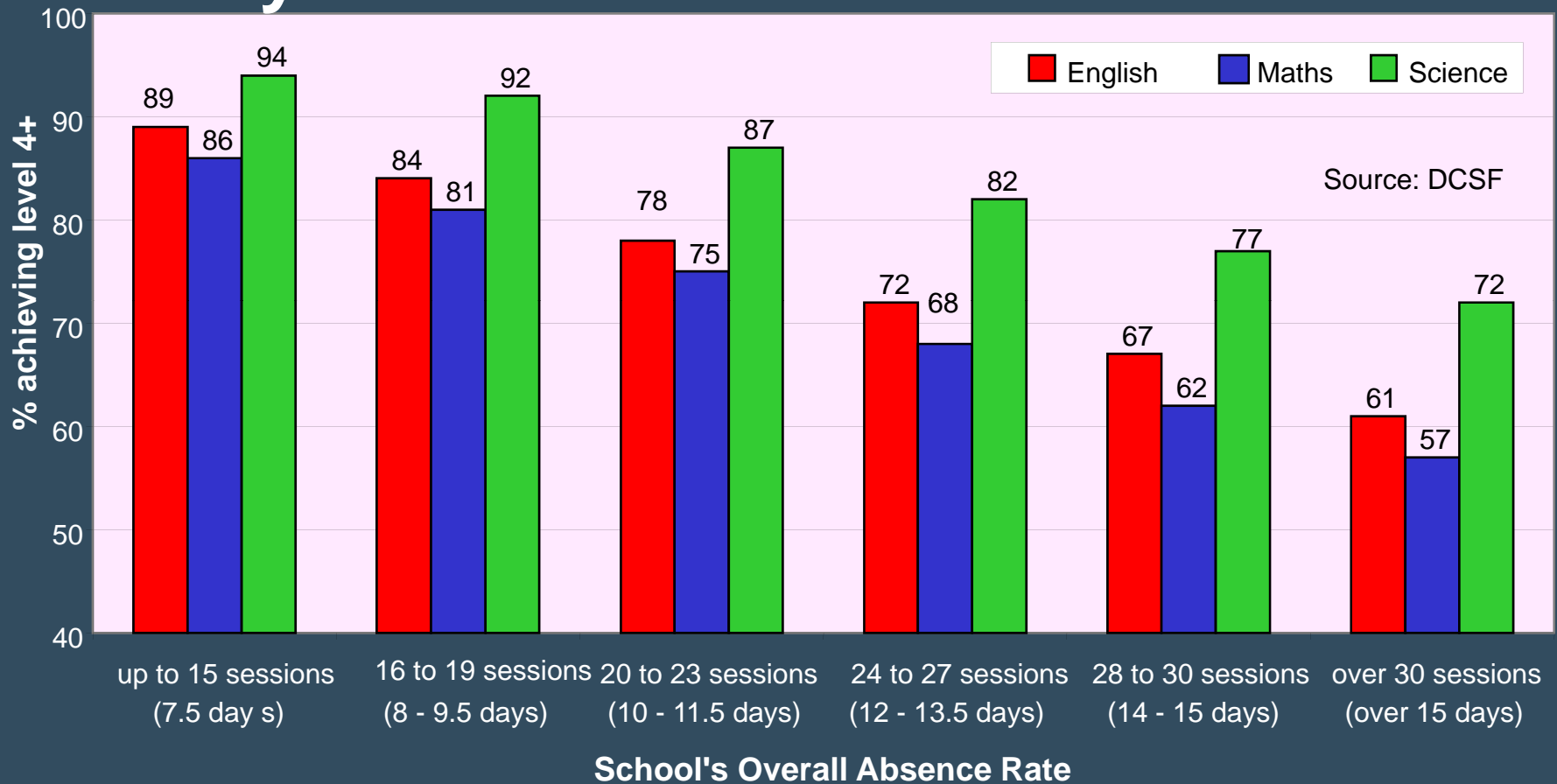
Secondary School Key Stage 4 Performance by Average Absence Sessions 2005/6



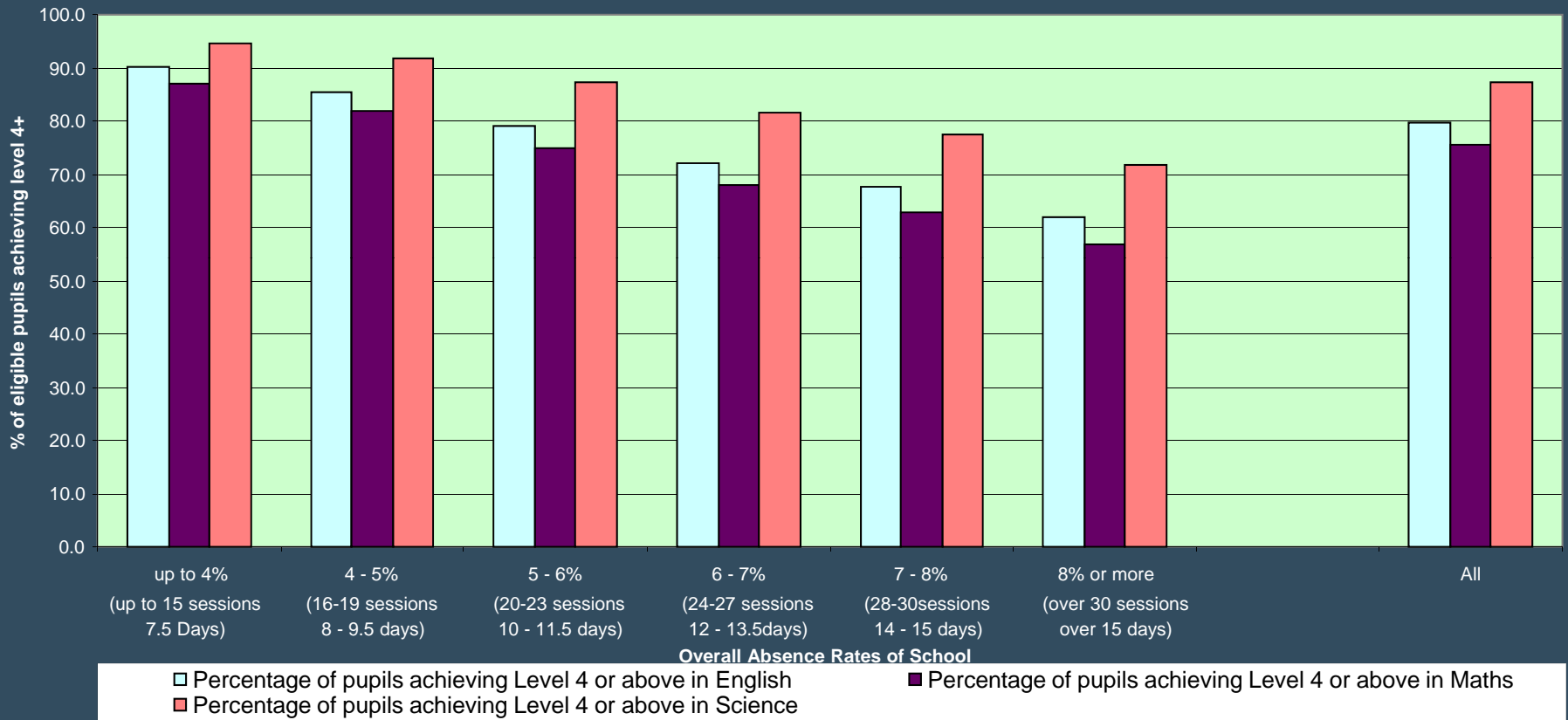
School-Level Key Stage 4 results by Overall Absence Rate 2006-7



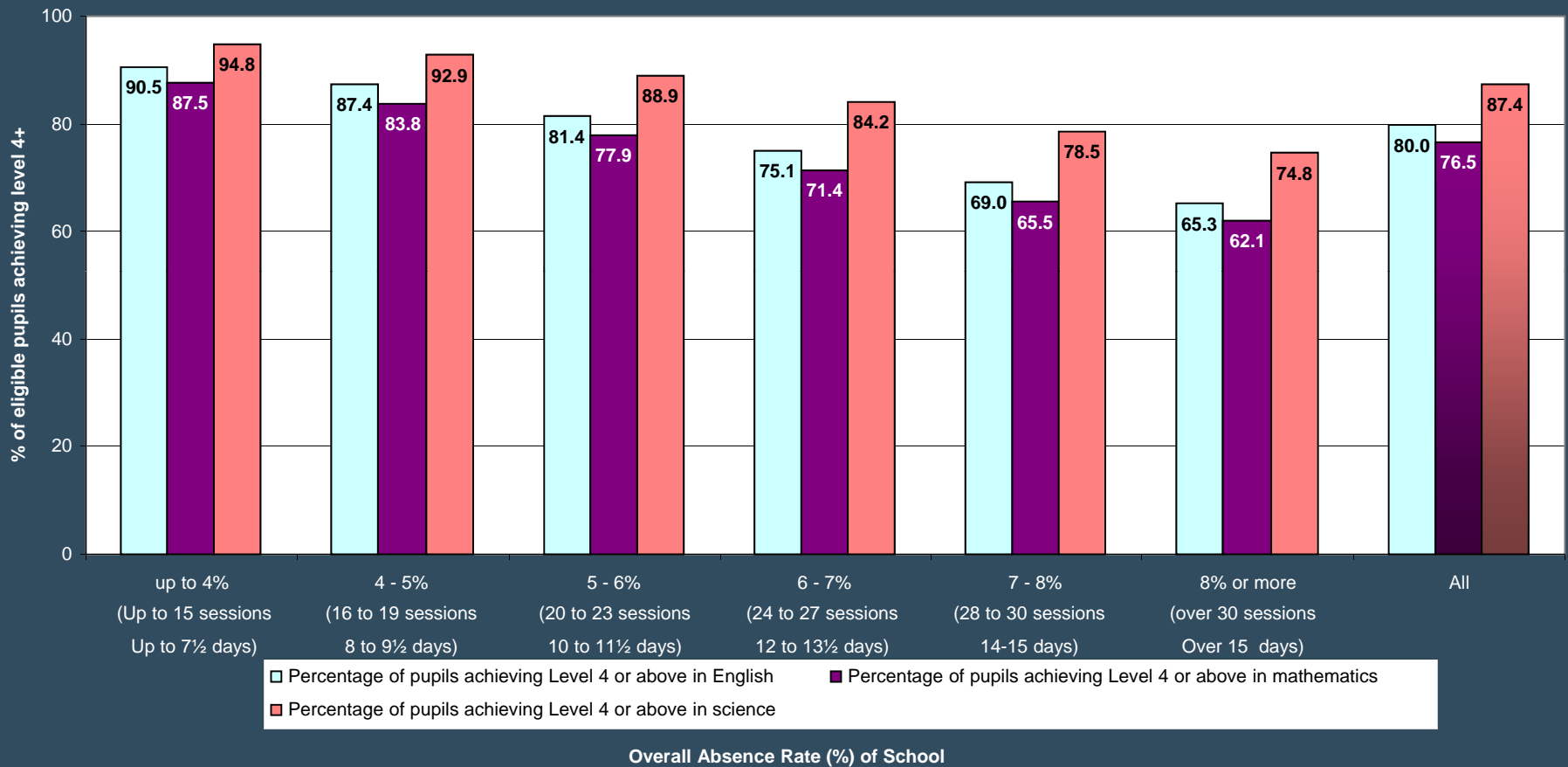
School-Level Key Stage 2 results by Overall Absence Rate 2003-4



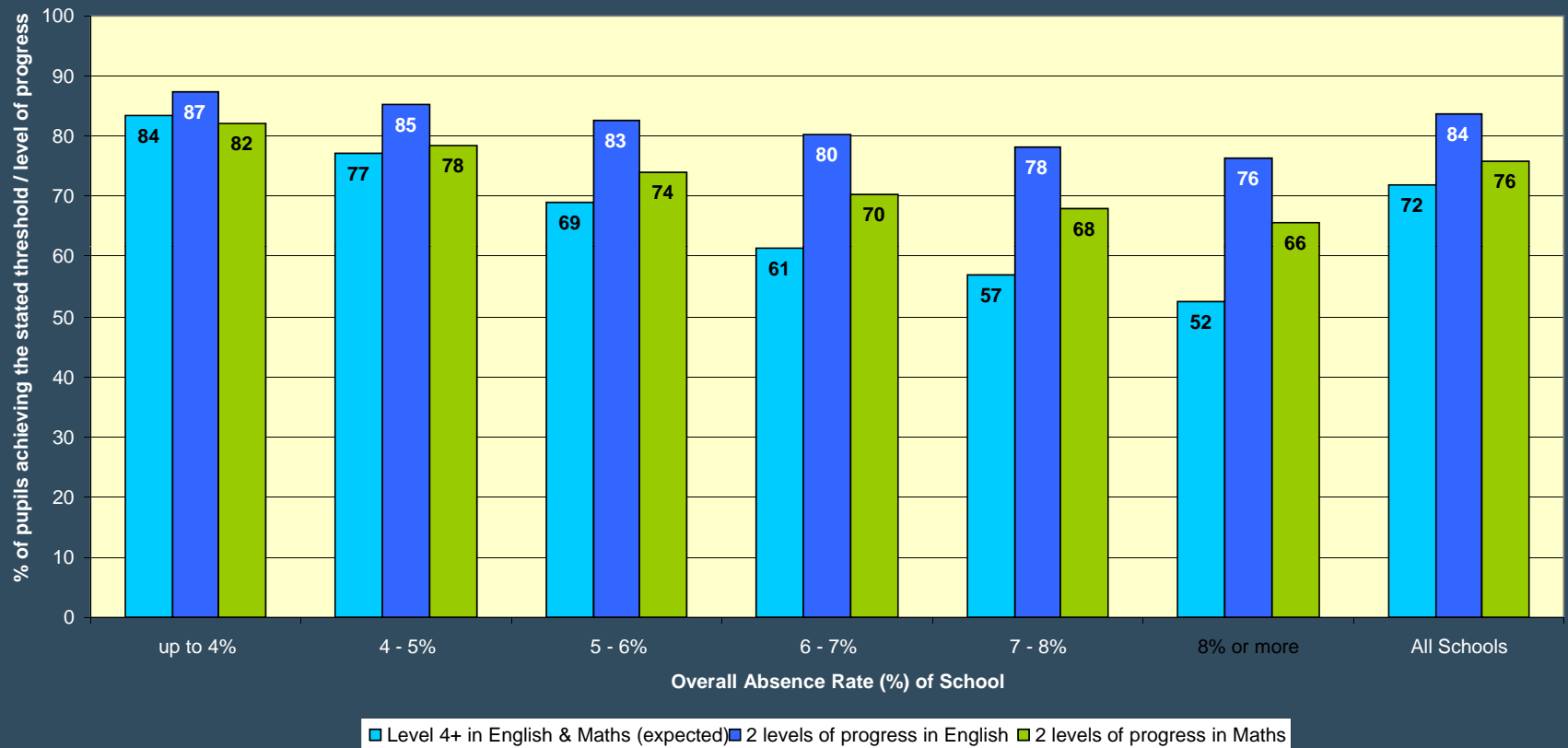
School-Level Key Stage 2 results by Overall Absence Rate 2004-5



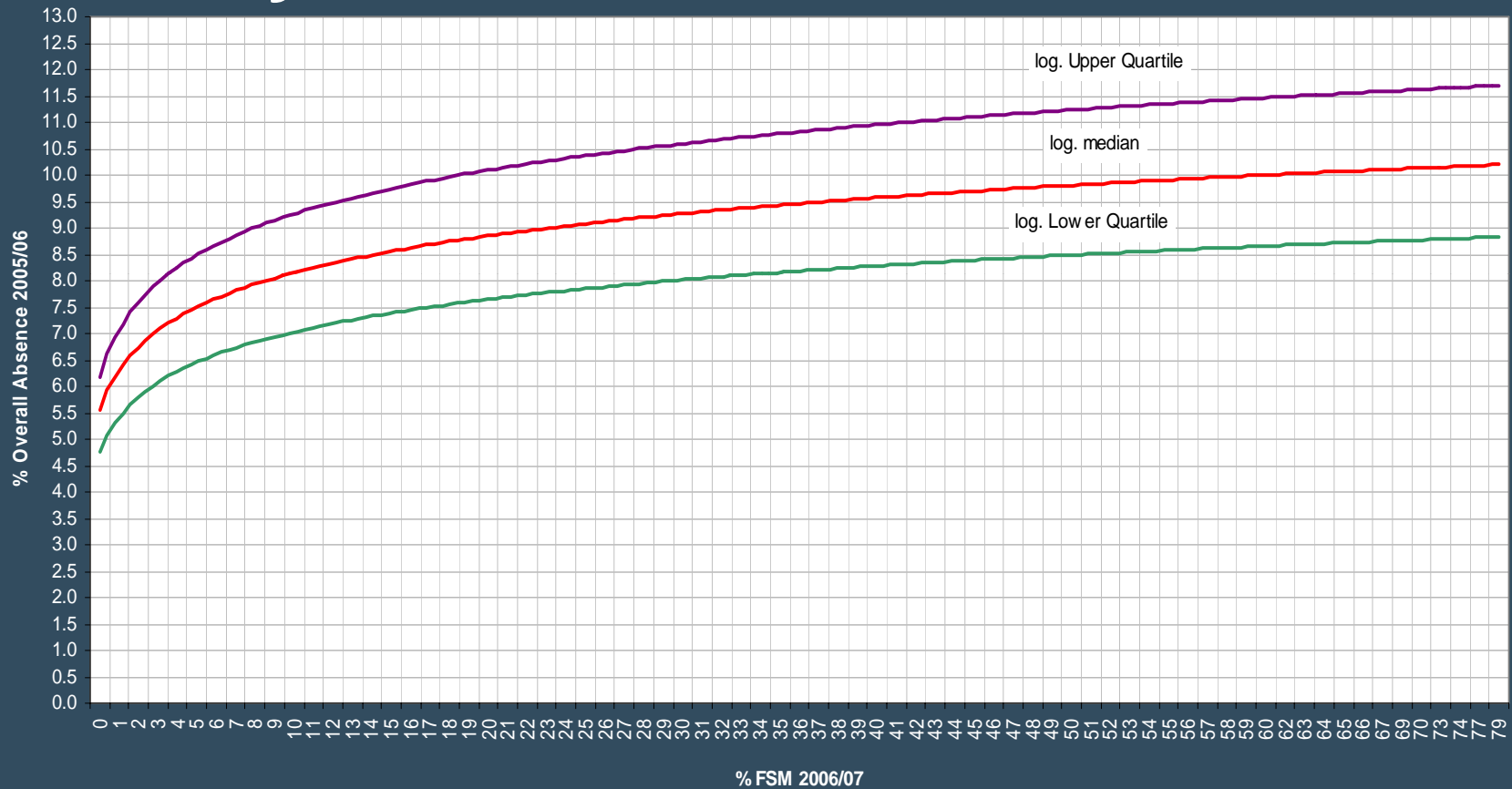
School-Level Key Stage 2 results by Overall Absence Rate 2005-6



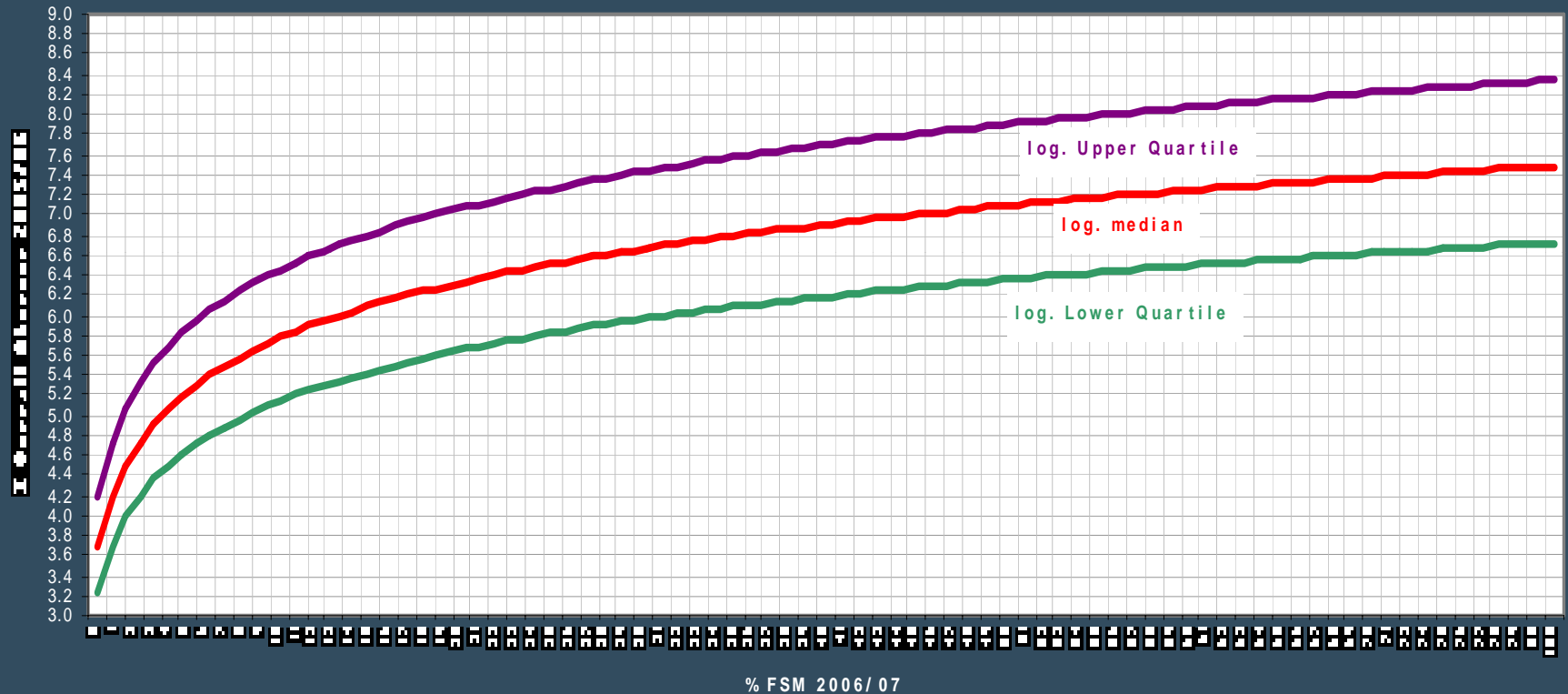
School-Level Key Stage 2 results by Overall Absence Rate 2006-7



Absence in Maintained Secondary Schools by level of Free School Meals



Absence in Maintained Primary Schools by level of Free School Meals



Probability of a pupil achieving 5 or more good GCSEs

